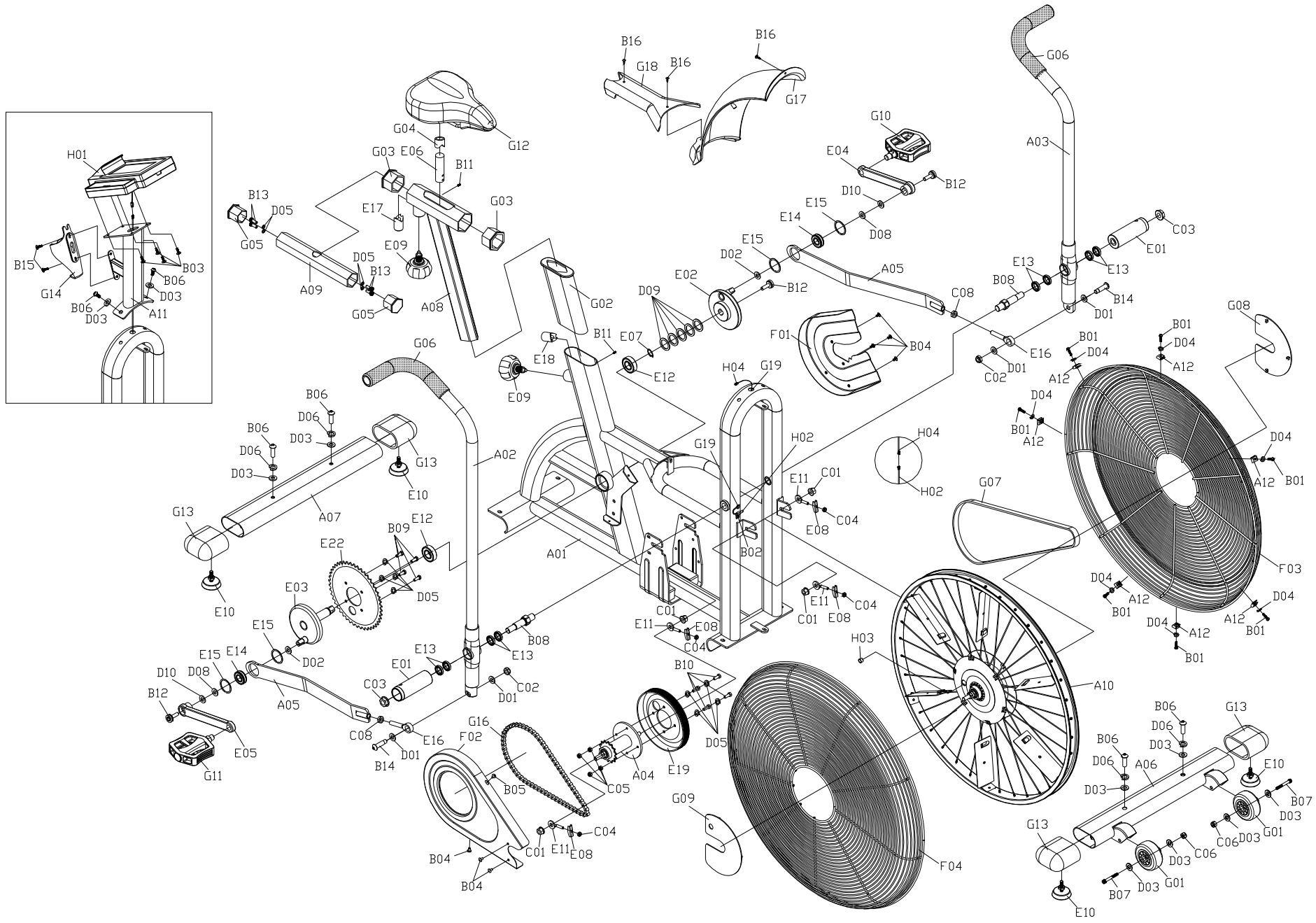


EXPLODED VIEW



PART LIST

ITEM	PART NAME	QTY
A01	Main Frame	1
A02	Right Handle Bar	1
A03	Left Handle Bar	1
A04	Chain Transmission Axle	1
A05	Linkage Arm	2
A06	Front Stabilizer	1
A07	Rear Stabilizer	1
A08	Seat Post	1
A09	Seat Post Slider	1
A10	Fan Steel Bracket Set	1
A11	Console Mast	1
A12	Fan Netting fixed plate	7
A13	*None*	*
B01	10x16x17mm Screw	7
B02	TP4x16L Screw (black)	1
B03	M5x10L Phillips Screw	4
B04	M5xP0.8x8L Phillips Screw (black)	7
B05	M5xP0.8x8L Phillips Screw (stainless)	1
B06	M8x20L Hex Round Head Screw (DIA 6mm)	6
B07	M8x45L Hex Round Head Screw (carbon)	2
B08	M22 x17x91.4 Hex Head Screw	2
B09	M6x12L Hex Head Screw (Loctite, silver)	4
B10	M6x16L Hex Head Screw (carbon , silver)	4
B11	M6x6L Hex Round Head Screw (black)	2
B12	Crank Fixing Bolt	3
B13	M6xP1.0x15L Socket Head Screw	4
B14	M10x40 Hex Flat Head Screw	2
B15	M5x12LHex Round Head Screw	2
B16	TP4x16L Screw (stainless)	3
C01	3/8x26" Acorn Nut Cap	4
C02	M10 Nylon Nut (thin) (black)	2

C03	M14xP1.5 , R Locknut (Loctite)	2
C04	M6 Hex Nut (silver)	4
C05	M6 Nylon Nut (silver)	4
C06	M8 Nylon Nut (thick)	2
C07	* None*	*
C08	M10 Hex Nut(black)	2
D01	10x19x2.0t Washer (black)	4
D02	16x21.8x2.0t Washer (black)	2
D03	8x19x1.0t Washer (black)	10
D04	5x1t Spring Washer (black)	7
D05	6x1t Spring Washer (black)	12
D06	8x2t Spring Washer (black)	4
D07	* None*	*
D08	16x21.8x1.0t Washer (black)	2
D09	Ø 26* Ø 20*1.0m/m Washer(stainless)	5
D10	Ø 21* Ø 16*0.3m/m Washer(stainless)	2
E01	Foot Peg (38.4x32x110.6)	2
E02	Crank Fixed Round Plate (L)	1
E03	Crank Fixed Round Plate(R)	1
E04	Left Crank	1
E05	Right Crank	1
E06	Seat Fixing Rod	1
E07	C Retainer (S-20)	1
E08	Adjustment Channel	4
E09	Pop Pin Knob	2
E10	Foot Adjuster	4
E11	Chain Tensioner	4
E12	#6004 Precise Bearing	2
E13	#6803 Precise Bearing	8
E14	#99502ZZ Ball Bearing	2
E15	Cir –Clip	4
E16	POS10 Bearing (M10x1.5)	2
E17	Inner Lock Tablet (φ 23*ψ9*23L)	1
E18	Inner Lock Tablet (φ φ 23*ψ9*37.5L)	1

E19	Front Chain Wheel	1
E20	*None*	*
E21	*None*	*
E22	Rear Chain Wheel	1
F01	Chain Guard (Left)	1
F02	Chain Guard (Right)	1
F03	Fan Cage (Left)	1
F04	Fan Cage (Right)	1
G01	Transportation Wheel	2
G02	Seat Post Support Bushing	1
G03	DIA 50 Hex End Plug	2
G04	Seat Fixed Hex Spacer	1
G05	DIA38 Hex End Plug	2
G06	Handlebar Sleeve	2
G07	V-Belt	1
G08	Fan Cage Cover (Left)	1
G09	Fan Cage Cover (Right)	1
G10	Left Pedal	1
G11	Right Pedal	1
G12	Seat Pad	1
G13	Stabilizer End Cap	4
G14	Water Bottle Holder	1
G15	*None*	*
G16	Steel Chain	1
G17	Wind Shield	1
G18	Frame Decoration Cover	1
G19	Wire Plug	2
H01	Console	1
H02	Sensor Wire(Lower) with Sensor	1
H03	Magnet	1
H04	Sensor Wire (Upper)	1